

808. VALS

Valsen hämtat ur "Notbok för C-Clarinetto. Tillhör
Johan Jans Son i Löfvåsen, Kila S:n, 1855".

Johan Jansson kallades allmänt för "Löfvås-Janne"

The image displays a musical score for a waltz, consisting of ten staves of music. The score is written in treble clef with a key signature of one flat (B-flat) and a 3/4 time signature. The music features a variety of rhythmic patterns, including eighth and sixteenth notes, often grouped with beams and slurs. There are several repeat signs (double bar lines with dots) throughout the piece, indicating sections to be played multiple times. The notation includes various ornaments and phrasing slurs, characteristic of 19th-century manuscript notation. The overall style is that of a simple, elegant waltz.

809. VALS

För C-klarinettt eller fiol

Musical score for Val 809, consisting of six staves of music. The key signature is one flat (B-flat) and the time signature is 3/4. The music features a variety of rhythmic patterns, including eighth and sixteenth notes, and rests. There are repeat signs and first/second endings throughout the piece.

810. VALS

Musical score for Val 810, consisting of six staves of music. The key signature is one sharp (F-sharp) and the time signature is 3/4. The music features a variety of rhythmic patterns, including eighth and sixteenth notes, and rests. There are repeat signs and first/second endings throughout the piece.

811. VALS

Musical score for Vals 811, consisting of six staves of music. The key signature is one sharp (F#) and the time signature is 3/4. The score includes a first ending (1.) and a second ending (2.) marked with a bracket and the number 2. The music features a mix of eighth and sixteenth notes, with some triplet-like patterns.

812. VALS

Musical score for Vals 812, consisting of eight staves of music. The key signature is one sharp (F#) and the time signature is 3/4. The score includes several triplet markings (3) and first ending markings (1.). The music is characterized by a steady eighth-note rhythm with occasional sixteenth-note patterns.

813. VALS

814. VALS

815. VALS

Musical score for Vals 815, consisting of eight staves of music in 3/4 time. The score is written in treble clef and features a variety of rhythmic patterns, including eighth and sixteenth notes, and rests. The music is divided into two main sections by a double bar line with repeat dots. The first section consists of the first four staves, and the second section consists of the remaining four staves. The piece concludes with a final double bar line.

816. VALS

Musical score for Vals 816, consisting of three staves of music in 3/4 time. The score is written in treble clef and features a variety of rhythmic patterns, including eighth and sixteenth notes, and rests. The music is divided into two main sections by a double bar line with repeat dots. The first section consists of the first two staves, and the second section consists of the remaining one staff. The piece concludes with a final double bar line.

817. VALS

Musical score for Val 817, consisting of five staves of music in 3/4 time. The key signature is one sharp (F#). The score includes various rhythmic patterns, including eighth and sixteenth notes, and rests. There are repeat signs and first/second endings indicated by double bar lines and dots.

818. VALS

Musical score for Val 818, consisting of seven staves of music in 3/4 time. The key signature is one sharp (F#). The score includes various rhythmic patterns, including eighth and sixteenth notes, and rests. There are repeat signs and first/second endings indicated by double bar lines and dots.

2 valser efter "Lövås-Janne" - Johan Jansson, Lövåsen,
Kila socken. Notboken, som är handskriven, är daterad 1855.
Lövås-Janne spelade C-klarinet, vilket märks på repertoaren.

819. VALS

Handwritten musical score for Val 819, consisting of six staves of music in 3/4 time. The key signature is one sharp (F#). The notation includes various rhythmic values, slurs, and dynamic markings. The piece concludes with a double bar line and repeat dots.

820. VALS

Handwritten musical score for Val 820, consisting of five staves of music in 3/4 time. The key signature is one sharp (F#). The notation includes various rhythmic values, slurs, and dynamic markings. The piece concludes with a double bar line and repeat dots.

2 valser efter "Lövås-Janne" - Johan Jansson, Lövåsen,
Kila socken. Nedtecknade år 1855. För C-klarinet eller violin.

821. PRÄSTEN UTI MARIESTAD VALS

Musical score for "Prästen uti Mariestad Vals". The score is written in treble clef with a key signature of one sharp (F#) and a 3/4 time signature. It consists of four staves of music. The first staff begins with a treble clef, a sharp sign, and a 3/4 time signature. The melody is characterized by eighth and sixteenth notes, often beamed together. The piece concludes with a double bar line and repeat dots.

822. VALS

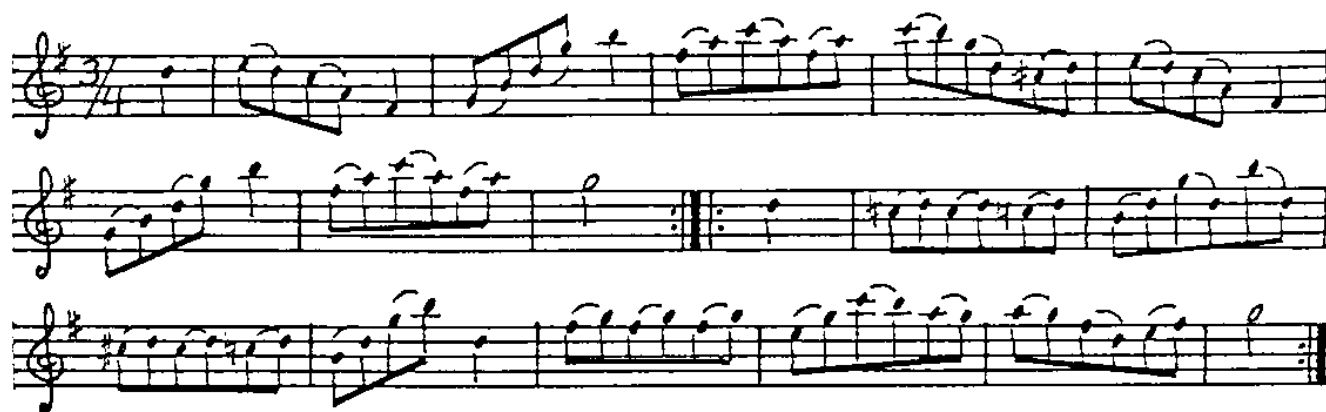
Musical score for "Vals". The score is written in treble clef with a key signature of one sharp (F#) and a 3/4 time signature. It consists of seven staves of music. The first staff begins with a treble clef, a sharp sign, and a 3/4 time signature. The melody features a mix of eighth, sixteenth, and quarter notes. The piece concludes with a double bar line and repeat dots.

823. VALS

Musical score for Vals 823, consisting of five staves of music in 3/4 time. The key signature is one sharp (F#). The score includes various rhythmic patterns, including eighth and sixteenth notes, and rests. A triplet of eighth notes is marked with a '3' in the third staff. The piece concludes with a double bar line and repeat dots.

824. VALS

Musical score for Vals 824, consisting of eight staves of music in 3/4 time. The key signature is one flat (Bb). The score includes various rhythmic patterns, including eighth and sixteenth notes, and rests. The piece concludes with a double bar line and repeat dots.

825. VALS826. "EMELIS HJERTKLAPPNING" Vals

Musical score for '826. "EMELIS HJERTKLAPPNING" Vals'. The score is written in treble clef with a key signature of one sharp (F#). It consists of nine staves of music. The first staff begins with a treble clef, a key signature of one sharp, and a 3/4 time signature. The music features a mix of eighth and sixteenth notes, often beamed together. The second staff contains a repeat sign with first and second endings. The third staff concludes the piece with a double bar line.

827. VALS

Musical score for piece 827, Vals, consisting of five staves of music in 3/4 time. The notation includes various note values, rests, and dynamic markings such as *mf* and *f*. The piece concludes with a double bar line and repeat signs.

828. VALS (Maria)

Musical score for piece 828, Vals (Maria), consisting of ten staves of music in 3/4 time. The notation includes various note values, rests, and dynamic markings such as *mf* and *f*. The piece concludes with a double bar line and repeat signs.

829. KADRILJ (QUADRILL)

Efter Johan Jansson, Lövåsen, Kila socken ("Lövås-Janne")

830. KADRILJ efter "Lövås-Janne" 1850-talet

831.



Stina Svensson, Bastmora

832. MILITÄR - POLKETT

Musical score for "832. MILITÄR - POLKETT". The piece is in 4/4 time and consists of three staves of music. The first staff begins with a treble clef and a 4/4 time signature. The melody is characterized by eighth and sixteenth notes, with a triplet of eighth notes in the second measure. The second staff continues the melody, featuring a key signature change to one sharp (F#) in the second measure. The third staff concludes the piece with a double bar line and repeat dots.

833. VALS

Musical score for "833. VALS". The piece is in 3/4 time and consists of ten staves of music. The first staff begins with a treble clef and a 3/4 time signature. The melody is primarily composed of eighth and sixteenth notes, with a triplet of eighth notes in the final measure. The second staff continues the melody, featuring a key signature change to one sharp (F#) in the second measure. The third staff concludes the piece with a double bar line and repeat dots. The fourth staff begins with a double bar line and repeat dots, followed by a key signature change to one sharp (F#) in the second measure. The fifth staff continues the melody, featuring a key signature change to one sharp (F#) in the second measure. The sixth staff concludes the piece with a double bar line and repeat dots. The seventh staff begins with a double bar line and repeat dots, followed by a key signature change to one sharp (F#) in the second measure. The eighth staff continues the melody, featuring a key signature change to one sharp (F#) in the second measure. The ninth staff concludes the piece with a double bar line and repeat dots. The tenth staff begins with a double bar line and repeat dots, followed by a key signature change to one sharp (F#) in the second measure.